



# ELECTRIC RANGE

## Model CS-ER24

### 24" wide, 208 Volt

### Standard Features

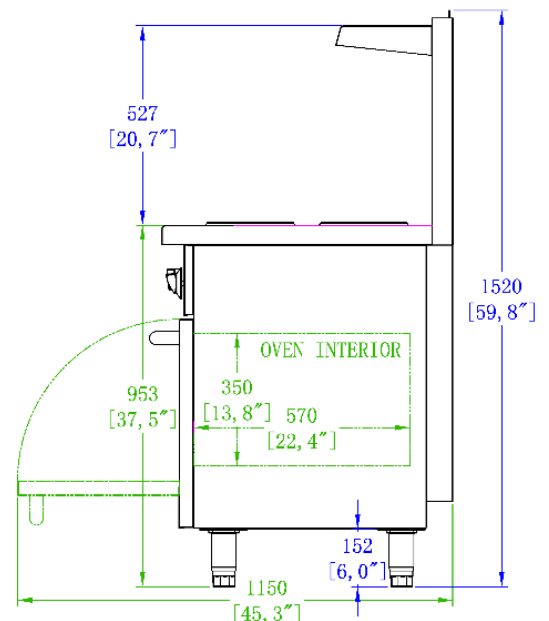
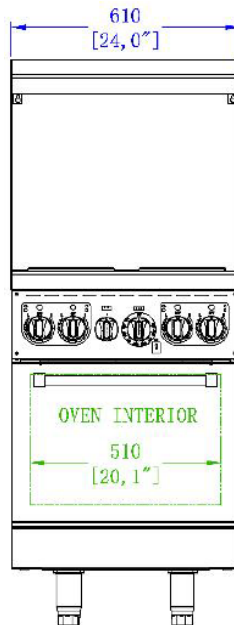
Stainless steel front, back & shelf, galvanized sides  
 Sturdy welded frame with heavy duty adjustable legs  
 Four (4) 9" diameter hobs; 2.6 kw front hobs, 2kw rear hobs  
 Oven temperature range 125° F to 500° F  
 Two (2) oven heating elements; one for oven roasting,  
 one ceiling element for broiling



Model CS-ER24-208



**WARNING:** This product can expose you to certain chemicals, which are known to the State of California to cause cancer or birth defects or other reproductive harm. For more information go to: [www.P65Warnings.com](http://www.P65Warnings.com)



See website  
for full warranty.

Model	Phase Amps	Volts / HZ	Total Heating Power	Oven Size	Packing Size	Net Wt.	Gross Wt.
CS-ER24-208	3 62.5	208 V / 60Hz	13 kW	20.1" x 22.4" x 13.8"	41" x 29" x 35"	300 lbs.	385 lbs.